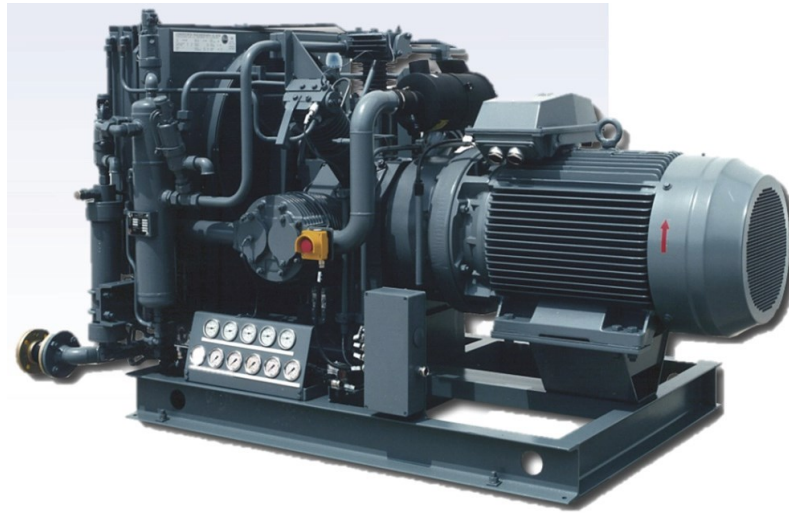


GL-115 Series CNG Fueling System



The GreenLine GL-115 Series is a fully integrated CNG fueling system that delivers industry leading features, reliability and safety. The GL-115 provides up to a 115 GGE/hr. CNG fill rate, making it the perfect fit for medium fleets looking to dispense up to 1,300 GGE per day. Based on the reliable and time proven LMF multi-stage compressor, the GL-115 is designed with a 100% duty cycle for rugged reliability.



Standard Features

Programmable Logic Controlled (PLC) Unattended Operation

- Automatic start/stop with purge delay
- Temperature compensated fill
- Priority bank control
- Condensate auto drain system
- Suction shutdown valve
- Crankcase heater

Safety Features (PLC Controlled alarms)

- Enclosure gas detection
- Discharge gas pressure/temperature
- Compressor temperature
- Stage over pressure
- Low/high inlet pressure
- Low oil level

HMI Touchscreen User Interface

- Graphical system status display
- Remote monitoring capability

Optional Features

- Weatherproof enclosure with control room
- Fast-fill cascade storage
- Low pressure dryer
- Multiple fill posts/dispensers
- Skid mount duplex configuration

GL-115 Series Specifications



Technical Specifications	
Control Panel:	HMI Touchscreen PLC controlled
Charge Rate:	240 CFM - 115 GGE/hr. (@ 30 psig inlet)
Gas Usage:	14,400 CFH
Max Discharge Pressure:	5,800 psig (400 BAR)
Power:	130 kW, 175 hp, 460V 3-phase
Min/Max Inlet Pressure:	10/30 psig
Compressor RPM:	1,200 RPM
Dimensions:	20 L x 8 W x 10 H (feet)
Dry Weight:	≈12,615 Pounds
Noise:	80 dB @ 1 meter distance
Number of Stages	(5) Stage reciprocating
Lubricant:	Synthetic oil
Filtration:	(2) HP coalescing, 1 LP finite
Interstage coolers and after coolers:	Industrial cooler block

Daily Capacity in Equivalent Gallons Based on Operating Hours									
4 Hours		6 Hours		8 Hours		10 Hours		12 Hours	
GGE	DGE	GGE	DGE	GGE	DGE	GGE	DGE	GGE	DGE
460	424	690	636	920	848	1,060	462	1,380	1,272

Standards Compliance
UL and CSA
NEC Zones Class 1, Division 2, Group D
NFPA 52
ATEX 95